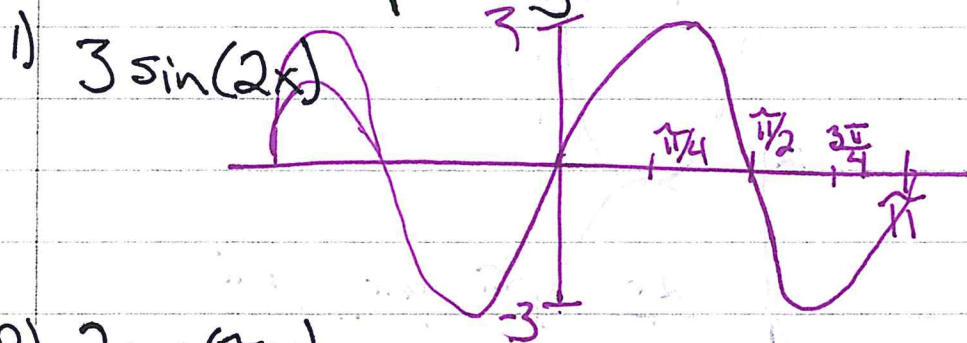
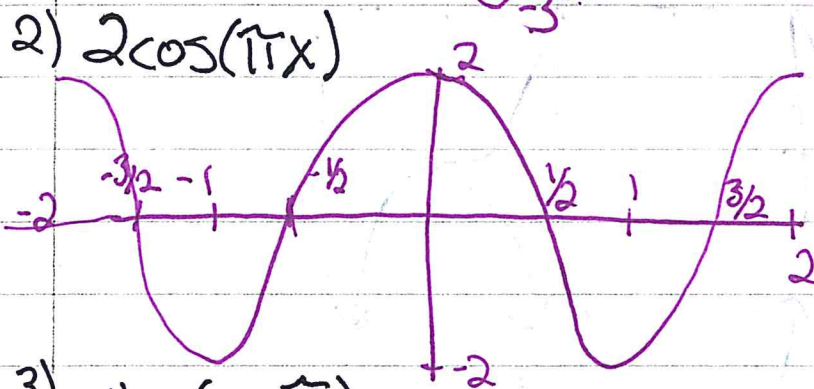


# Graphing Practice

Key

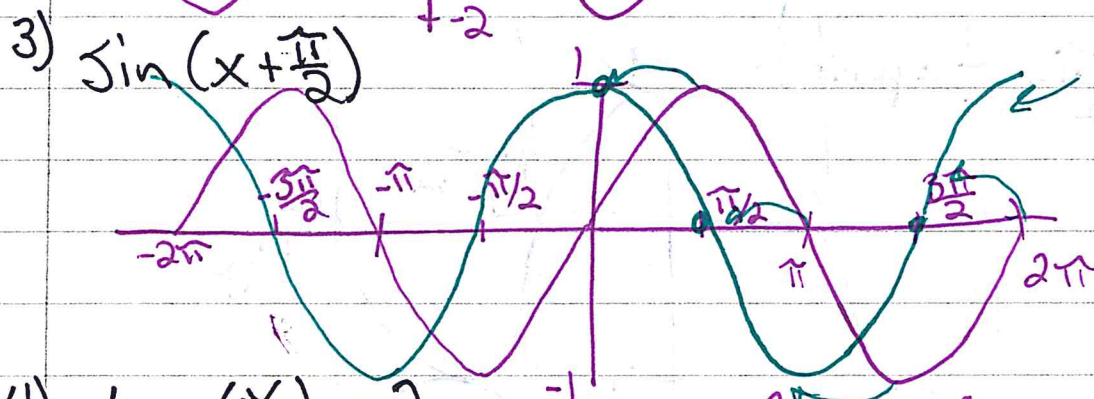


$$\frac{2\pi}{2} = \text{period}$$



$$\frac{2\pi}{\pi} = 2 = \text{period}$$

$$\text{amp} = 2$$



Blue answer

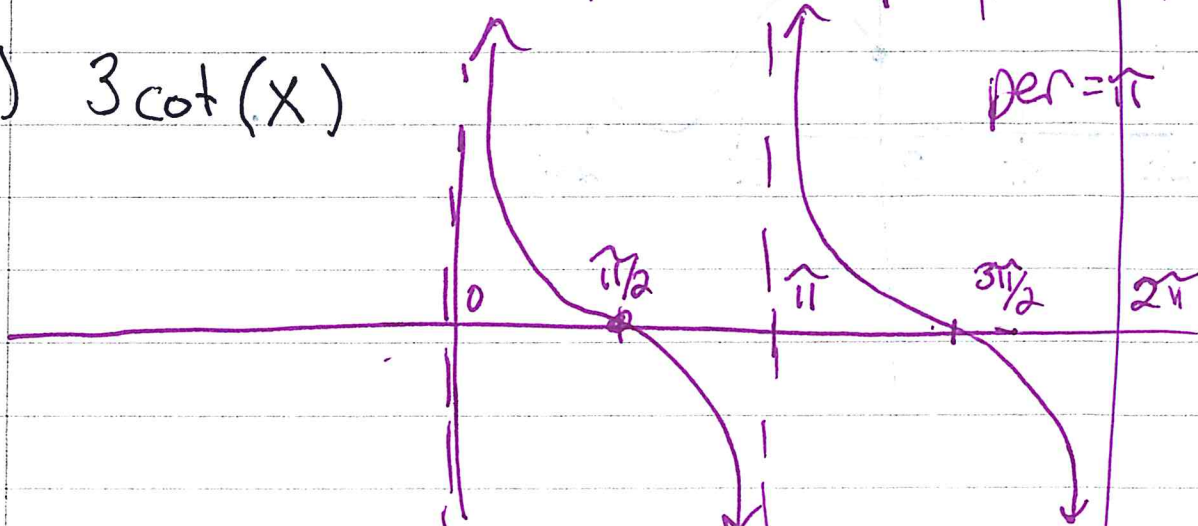
write as y=4)

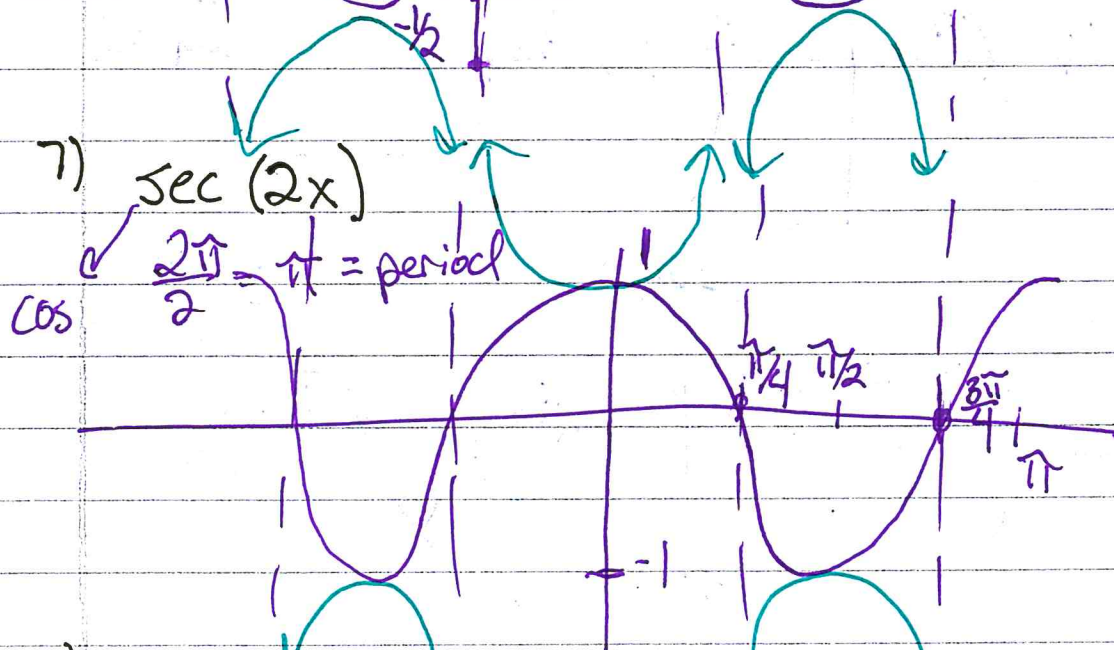
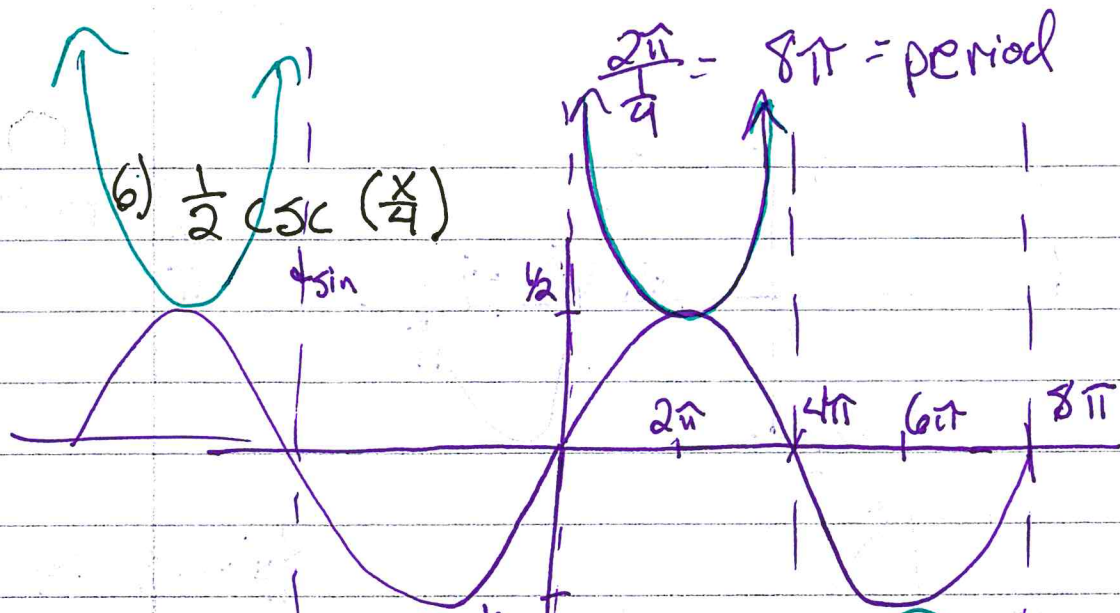
4)  $\tan(\frac{x}{2}) + 2$

$$\frac{2\pi}{\frac{1}{2}} = 2\pi = \text{period}$$



5)  $3\cot(x)$





8)  $\sin(x) + 2$

